



# INSTRUCTION BULLETIN

No. 9045079  
Machine: S16  
Published: 08-2021  
Rev. 00

**NOTE: DO NOT DISCARD the Parts List from the Instruction Bulletin. Place the Parts List in the appropriate place in the machine manual for future reference. Retaining the Parts List will make it easier to reorder individual parts and will save the cost of ordering an entire kit.**

*NOTE: Numbers in parenthesis ( ) are reference numbers for parts listed in Bill of Materials.*

Installation instructions for **kit number 9045053**

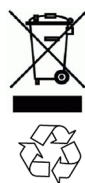
Kit installation must be performed by TennantTrue<sup>®</sup> service or an authorized service provider.

## SYNOPSIS:

This kit contains the parts needed to install an overhead guard on S16 sweepers.  
Please follow step-by-step instructions.

## SPECIAL TOOLS / CONSIDERATIONS: NONE

(Estimated time to complete: 1 hour)



### PROTECT THE ENVIRONMENT

Please dispose of packaging materials, used machine components such as batteries and fluids in an environmentally safe way according to local waste disposal regulations.

Always remember to recycle.

## PREPARATION:

**FOR SAFETY: Before leaving or servicing machine, stop on level surface, turn off machine, and remove key.**

## INSTALLATION:

*NOTE: If there is an overhead hoist or crane available, the overhead guard top (1), overhead guard left leg (2), and overhead guard right leg (3) can be pre-assembled off the machine and then lifted onto the machine to be installed. Leave all hardware loose so the overhead guard left leg and overhead guard right leg can be adjusted for installation onto the machine. Tighten all loose hardware after the overhead guard assembly is fully installed onto the machine.*

*NOTE: Do not completely tighten hardware and hardware used to install the overhead guard top (1), overhead guard left leg (2), and overhead guard right leg (3) onto the machine. All hardware is tightened during final adjustment/installation.*

1. Remove the round hole plugs from the locations where the overhead guard left leg (2) and overhead guard right leg (3) will be installed onto the machine. (Fig. 7)
2. Use two SEMS M8 hex screws (6), two flat washers (4), and two M8 hex nuts (5) to install the overhead guard left leg (2) onto the left tower. (Fig. 1/Fig. 7)

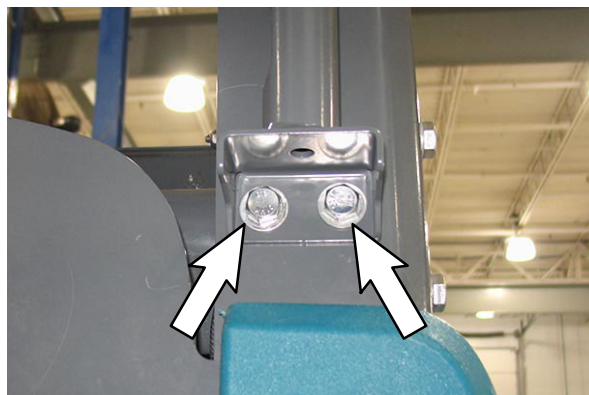
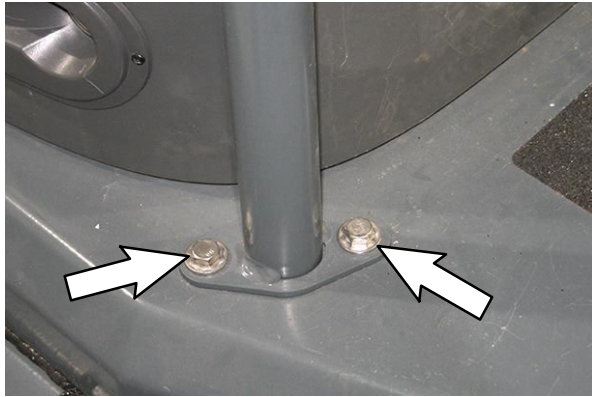


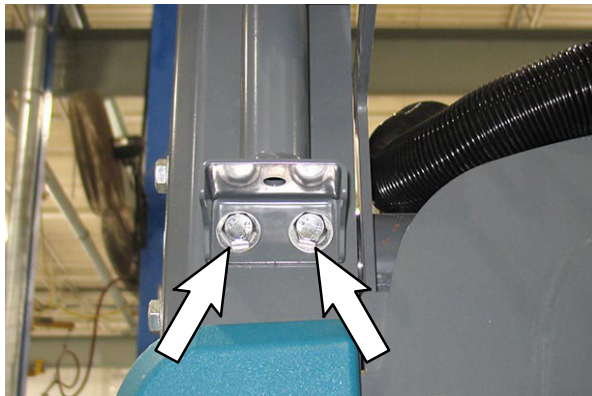
FIG. 1

3. Use two SEMS M8 hex screws (6) to install the overhead guard left leg (2) onto the frame of the machine. (Fig. 2/Fig. 7)



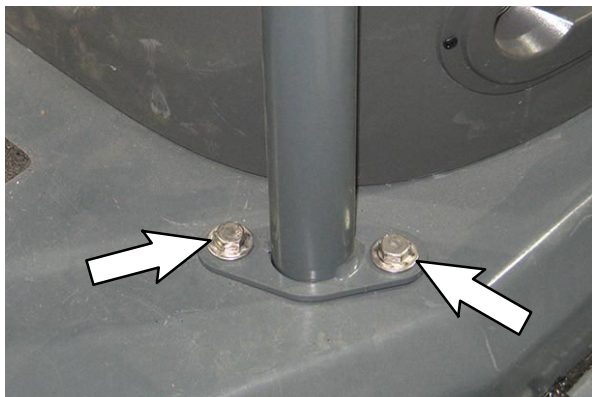
**FIG. 2**

4. Use two SEMS M8 hex screws (6), two flat washers (4), and two M8 hex nuts (5) to install the overhead guard right leg (3) onto the right tower. (Fig. 3/Fig. 7)



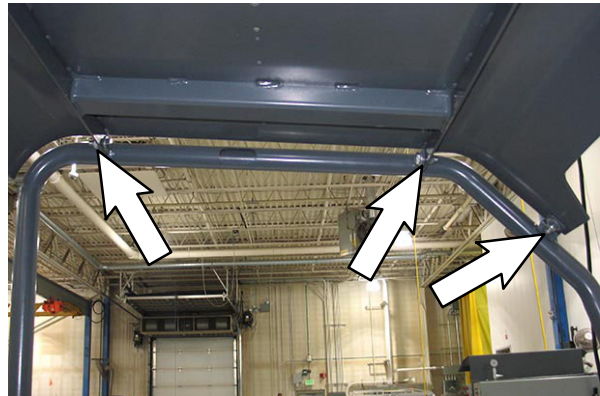
**FIG. 3**

5. Use two SEMS M8 hex screws (6) to install the overhead guard right leg (3) onto the frame of the machine. (Fig. 4/Fig. 7)



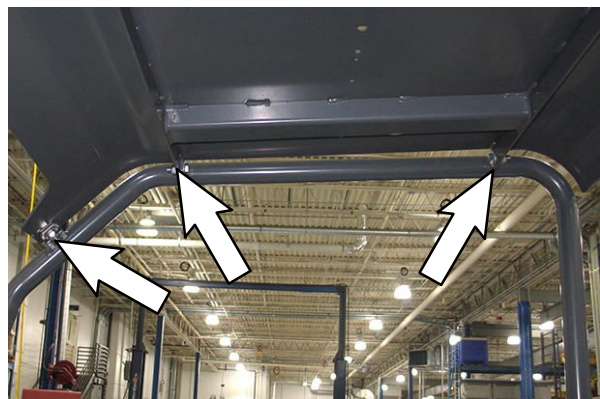
**FIG. 4**

6. Use two M10 hex screws (8), four flat washers (7), and two M10 hex nuts (9) to install the overhead guard top (1) onto the overhead guard left leg (2). (Fig. 5/Fig. 7)



**FIG. 5**

7. Use two M10 hex screws (8), four flat washers (7), and two M10 hex nuts (9) to install the overhead guard top (1) onto the overhead guard right leg (3). (Fig. 6/Fig. 7)



**FIG. 6**

8. Tighten all remaining loose hardware to fully secure the overhead guard assembly to the machine. (Fig. 7)

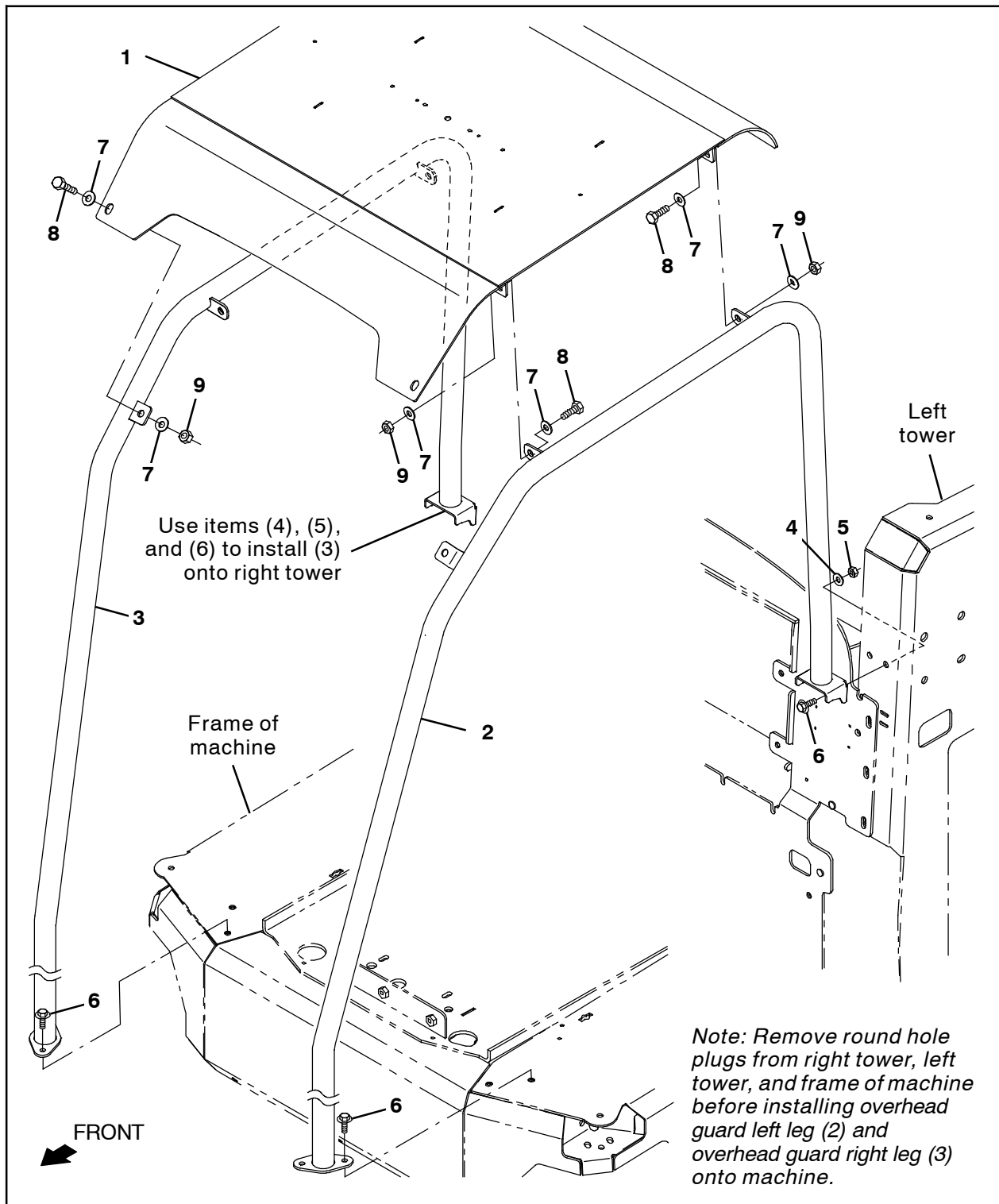


FIG. 7

---

**Bill Of Materials For OHG Kit, CI [S16] - 9045053**

<b>Ref.</b>	<b>Tennant Part No.</b>	<b>Description</b>	<b>Qty.</b>
1	1201247	Guard Wldt, Top, OHG	1
2	1239388	Tube Wldt, OHG, LH	1
3	1239390	Tube Wldt, OHG, RH	1
4	01685	Washer, Flat, 0.38b 0.88d .08, SS	4
5	08713	Nut, Hex, Lock, M8 X 1.25, NI, SS	4
6	1072628	Screw, Hex, M8 X 1.25 X 25, SS, SEMS	8
7	32492	Washer, Flat, 0.38, Std	12
8	03192	Screw, Hex, M10 X 1.50 X 30, 8.8	6
9	41430	Nut, Hex, Lock, M10 X 1.5, NI	6

---

TENNANT COMPANY  
P. O. Box 1452  
Minneapolis, MN 55440-1452